

# HARDKORR™

## USER MANUAL



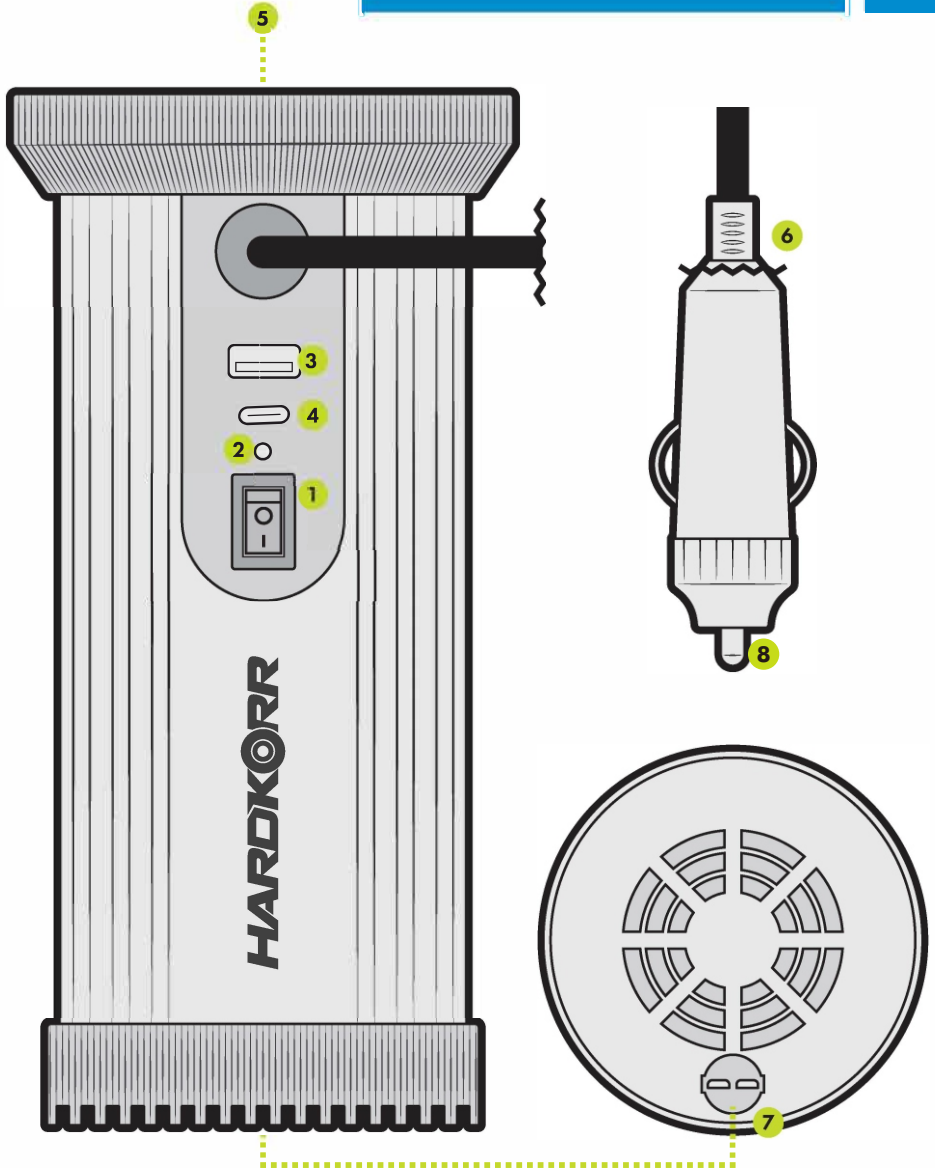
# 150W CAN INVERTER

HKPINVAC150C

V1.0 - 11.2025

**IMPORTANT, RETAIN FOR FUTURE REFERENCE: READ CAREFULLY****• CAUTION: KEEP OUT OF REACH OF CHILDREN**

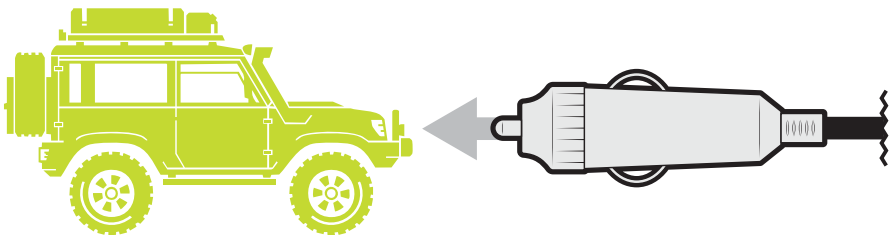
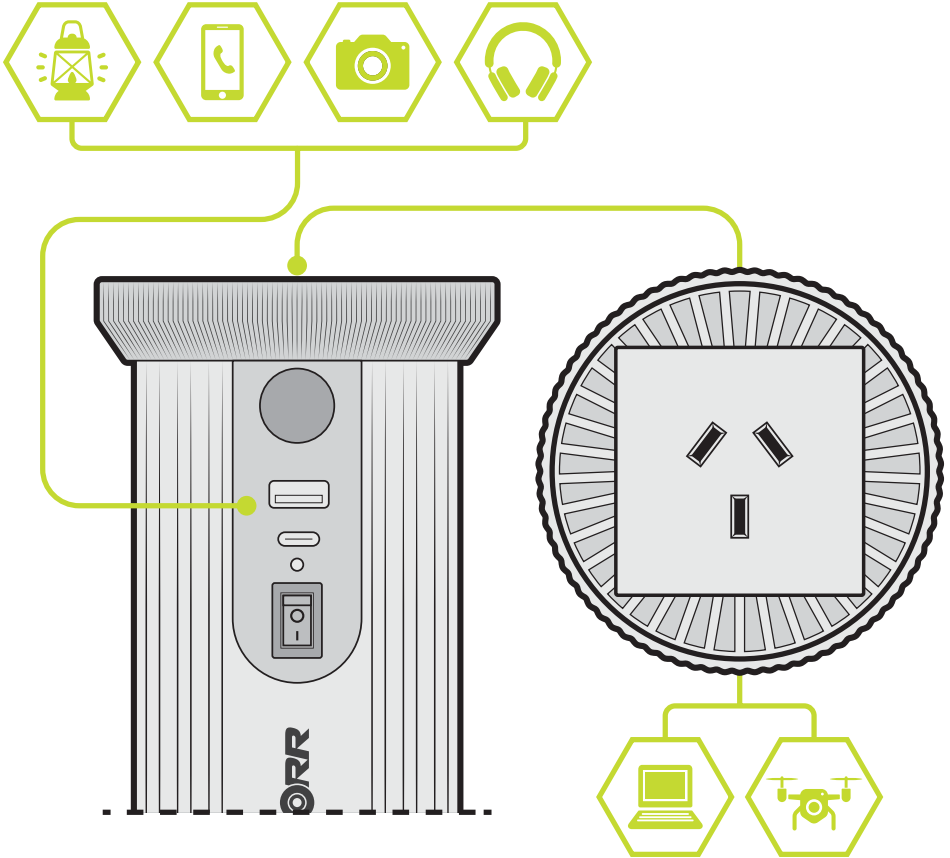
- This inverter should not be used by persons (including children) with reduced physical, sensory or mental capabilities, or lack of experience and knowledge, unless they are supervised or have been instructed on how to use the appliance by a person responsible for their safety.
- Do not alter or disassemble this inverter under any circumstances. Incorrect handling or reassembly may result in a risk of electric shock or fire and may void the unit warranty.
- Do not store the inverter in a location where it may be subject to water, temperatures below  $-30^{\circ}\text{C}$  or above  $70^{\circ}\text{C}$ , or in areas where it's at risk of contacting chemicals, fumes, or gases.
- The inverter contains sensitive electrical equipment which may be damaged if the unit is subjected to pressure or impact. Ensure that the inverter is securely mounted to prevent it from falling.
- The inverter should be used in a way that allows for proper ventilation around the unit. Ensure that the fans and vents are not obstructed.
- The inverter should only be used with devices that are in safe working condition. Make sure to inspect both the wattage of the device and its leads and wires before operating.
- The inverter generates AC 240V power which, in extreme situations, can cause severe injury or death. Whilst the inverter has been engineered with advanced internal protections, caution should be used when operating the unit. Metal objects (except for dedicated plugs) should be kept away from the inverter's ports.



1	On/off switch	5	Output voltage 240V AC
2	LED status indicator	6	Cigarette lighter plug
3	USB-A output	7	mini-blade fuse
4	USB-C output	8	Input voltage 12V DC

SPECIFICATIONS	HKPINVAC150C
WATTAGE	150W
SURGE WATTAGE	300W for 2 seconds
INPUT VOLTAGE RANGE	12V
OUTPUT VOLTAGE & CURRENT	240V AC $\pm$ 10%, 50Hz $\pm$ 3Hz
NO LOAD CURRENT	<0.25A
EFFICIENCY	89%
WAVE FORM	Modified sine-wave
USB-A OUTPUT	5V / 2.0A
USB-C OUTPUT	20W
FUSE	15A mini-blade fuse
WORKING TEMPERATURE	0°C ~ 40°C @100% load
STORAGE TEMPERATURE	-30°C ~ 70°C
DIMENSIONS	165mm x 80mm (70mm base width)
WEIGHT	0.5kg
PROTECTIONS	Over temperature, over load, short circuit
CERTIFICATIONS	CE, RoHS, RCM

**DO NOT CONNECT APPLIANCES THAT EXCEED 150W.  
WARRANTY VOID IF DAMAGE OCCURS DUE TO MISUSE.**



# HARDKORR



## DISCLAIMER

While caution has been taken to ensure the accuracy of the contents of this guide, Hardkorr assumes no responsibility for errors or omissions. Please note that specifications and product functionality may change without notice.

For assistance with assembly or installation, parts and service, please visit [www.hardkorr.com](http://www.hardkorr.com) or contact customer service through the following:



Toll Free:

**1800 533 544**

Monday - Friday

**9AM - 4PM (AEST)**



Language spoken: English

**support@hardkorr.com**

Our goods come with guarantees that cannot be excluded under the Australian Consumer Law. You are entitled to a replacement or refund for a major failure and compensation for any other reasonably foreseeable loss or damage. You are also entitled to have the goods repaired or replaced if the goods fail to be of acceptable quality and the failure does not amount to a major failure.

Hardkorr warrants that this product will be free from defects in material and workmanship for two years. The warranty commences on the date of purchase by the original purchaser, and is not transferable. To access the benefits of this warranty, you must retain your proof of purchase and follow any other direction we reasonably give you (e.g. completing and returning your warranty card if applicable).

## TO BEGIN A WARRANTY CLAIM:

If you believe your Hardkorr product is defective, it must be returned to Hardkorr for inspection by our warranty claims department.

1. You must have a Return Authorisation (RA) number. To get your RA number, please complete the form found on our website and wait for the warranty team to contact you.
2. Once you have an RA number, you must arrange for the product must be shipped at your own expense back to Hardkorr (keep your receipt). The address for shipment will be provided when we issue your RA number.

3. Please be sure that your RA number is clearly marked on the outside of the packaging used for shipping.

Completing the steps as mentioned will ensure a faster process of your claim, so that Hardkorr can get your product back to you as soon as possible.

Once we receive your returned product, our technicians will inspect it. We will then notify you of the outcome of your claim.

If we accept your warranty claim, we will either repair, replace or refund the goods at our discretion. We will also reimburse you for the shipping costs you incurred in sending the goods back to us. Any products that we choose to replace or refund become the property of Hardkorr.

If we do not accept your claim, we will advise you of the reason and hold your product for collection. You will need to arrange and pay for the product to be shipped back to you. If your product is not collected within 30 days of your warranty claim being finalised, we may destroy it.

Your warranty is voided if we (at our sole discretion) determine that there is evidence of one or more of the following:

**Negligence:** Improper installation, improper or extreme use, use that contravenes this instruction manual, etc.

**Abuse:** Road hazards, Damage beyond the limits of "normal wear and tear."

**Unauthorised Repair:** Repair service performed by an unauthorised service centre.

**Disassembly:** Any attempt to open, tamper with or otherwise compromise the integrity of the product.

**Consequential damage:** Damage to this product caused by the failure of another component of the vehicle or device in which this product is installed.

Note regarding exterior finishes: Hardkorr uses the highest quality materials available, but depending on location, environment and exposure, the colour of exterior surfaces can fade. We will not approve any warranty claims that relate to fade.

## DISCONTINUED ITEMS

Discontinued items that are still under warranty will be reviewed by Hardkorr. If a discontinued item is covered under warranty it may be replaced by an equivalent or superior item. If an equivalent item is not available Hardkorr will determine terms of resolution on a case-by-case basis.

LIFE  
WITHOUT  
LIMITS

**HARDKORR™**

[f](#) [@](#) [d](#) @HARDKORRAU

[WWW.HARDKORR.COM](http://WWW.HARDKORR.COM)