

HARDKORR

PURE-SINE **NEW** INVERTER RANGE



WITH AC TRANSFER SWITCH

SKU: HKPINVAC2000



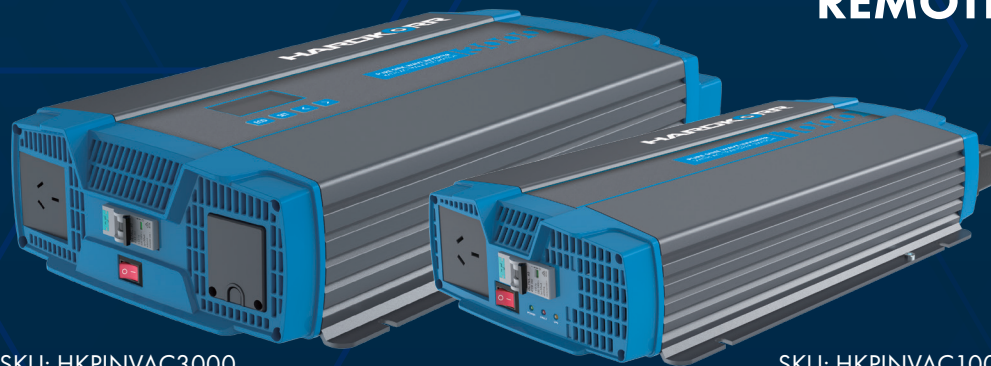
WHISPER-QUIET FAN OPERATION

INCLUDES INVERTER REMOTE

1000W *RRP*
\$499

2000W *RRP*
\$899

3000W *RRP*
\$1199



SKU: HKPINVAC3000

SKU: HKPINVAC1000

Run your favourite 240V appliances you'd usually use at home, on the go, no matter where you are.

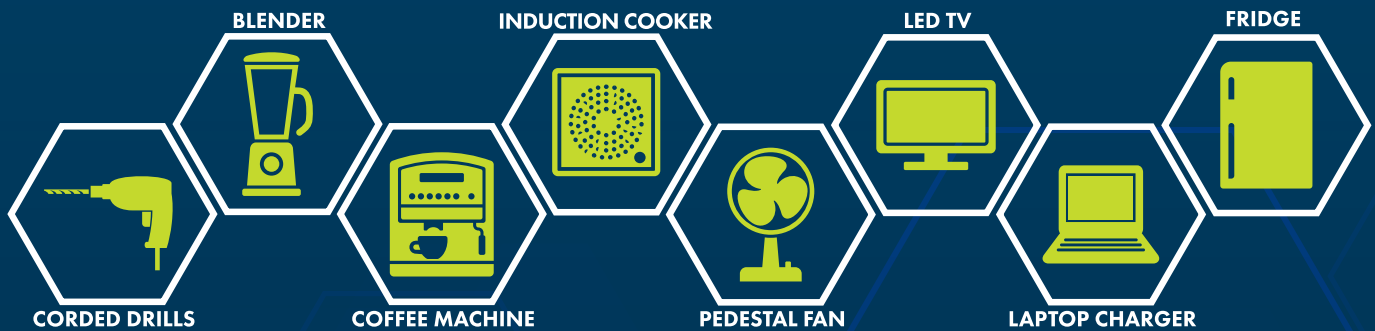
Our pure sine wave inverters convert the 12V power from your batteries into smooth, clean 240V power so that you can run almost anything, from your power tool battery chargers, right through to your coffee machines and induction cooktops.



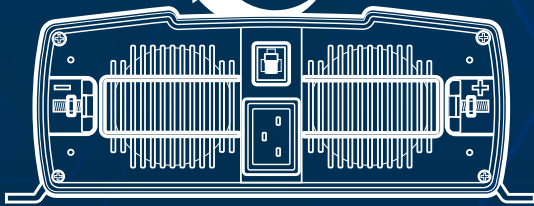
AC SWITCHING

SAVE BATTERY LIFE BY SWITCHING SEAMLESSLY TO MAINS POWER WHEN AVAILABLE

ON-THE-GO POWER FOR YOUR DEVICES



AC SWITCHING



Run your 240V appliances from mains power in an instant. Equipped with an automatic AC transfer switch function, our inverters will seamlessly transition your inverter from running off your 12V battery supply to mains power. Useful for those traveling in caravans, camper trailers, touring setups, or boats, it's ideal for when you've decided to set up at a powered site for the night.

The feature will cut the 12V supply as soon as it detects AC power, saving your batteries from discharging and allowing for a more efficient transfer of power.

	1000W	2000W	3000W
Continuous Power	1000W	2000W	3000W
Surge Power	2000W	4000W	6000W
AC Output Waveform	Pure Sine Wave (THD <3%)		
AC Output Voltage	240V ±3%		
AC Output Rating	10A	10A	15A
Input DC Range	10.5 – 15.5V		
Max Efficiency	Full Load >89%, Half Load >92%		
Standby Current Draw	<1.1A	<1.3A	<1.6A
Eco Mode Current Draw	<0.3A		
Operating Temperature	-20°C – 45°C		
Dimensions	404.4mm (L) x 209mm (W) x 78.7mm (H)	452.7mm (L) x 253mm (W) x 93.7mm (H)	505.5mm (L) x 278.4mm (W) x 103.1mm (H)
Inbuilt Protections	Over/Under Voltage, Short Circuit/Overload, Over-Temperature Protections		
Weight	3.0kg	4.8kg	6.5kg